

TIRES & TIRE CHAINS

Bring this with you in your truck when driving during winter!

From November 1st (October 16th in Nordland, Troms, and Finnmark)

- Min. 5 mm tread depth • Studded tires are allowed • Mandatory to bring snow chains

From November 15th

- Winter tires* Min. 5 mm tread depth • Studded tires are allowed
- Mandatory to bring snow chains

From March 31st

- Min. 1,6 mm tread depth • Studded tires are allowed
- Mandatory to bring snow chains

From the first Monday after Easter Monday (April 30th in Nordland, Troms, and Finnmark)

- Min. 1.6 mm tread depth

* Winter tires marked with "3PMSF" ("3 peak mountain snowflake") are to be used on drive axles and front steering axles.

* Winter tires marked with "M+S" ("Mud and snow") or "3PMSF" ("3 peak mountain snowflake") are to be used on all other axles and trailer.

REMEMBER!
Correct
wheel equipment
is the driver's
responsibility



Snow chains must fit the wheel dimensions

Snow chains have to be made of metal/steel. Snow chains must be in contact with the road surface at all time.

Truck without trailer:

- One snow chain dimensioned to fit the vehicle's front wheel
- Two* snow chains dimensioned to fit the driving wheels

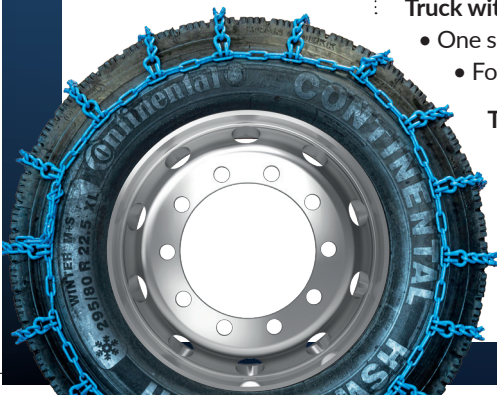
Truck with trailer:

- One snow chain dimensioned for the vehicle's front wheel
- Four* snow chains dimensioned to fit the driving wheels

Trailer:

- Two snow chains dimensioned to fit the trailer's wheels

* When using "On Spot", or similar solutions, this will replace 2 snow chains.



TIRES & TIRE CHAINS

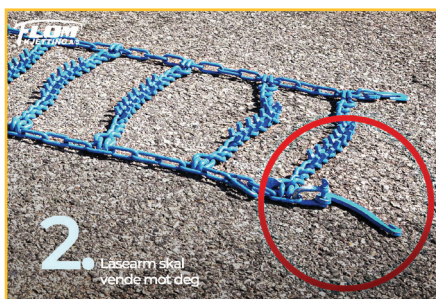
Bring this with you in your truck when driving during winter!

How to attach tire chains

ALWAYS USE parking lights and reflective vest when installing snow chains in order to enable other motorists to discover you quickly!



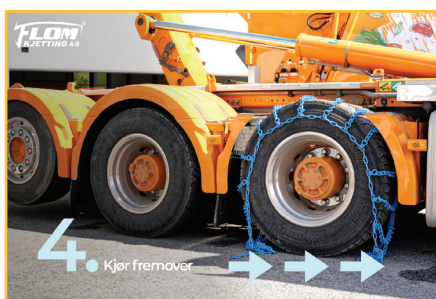
Lay the chain on the ground with the studs facing upwards



The outer fastening lock should face toward you



Lift the chain onto the wheel



Drive forward



Hook up the inner side chains



Hook up the outer side chains and tighten

You will find more information about driving on Norwegian winter roads on Trucker's Guide: www.vegvesen.no.